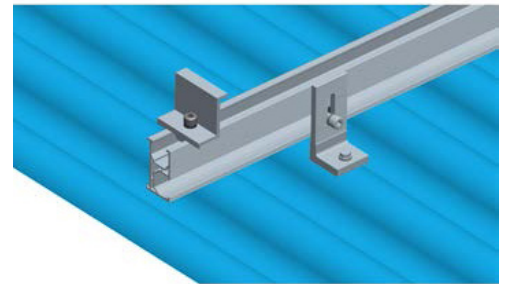
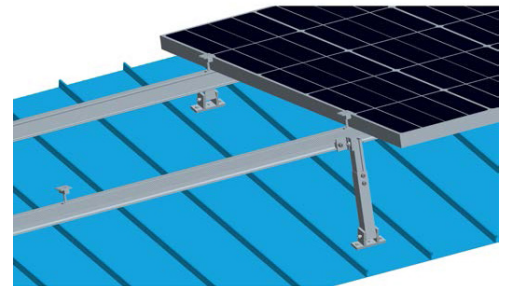
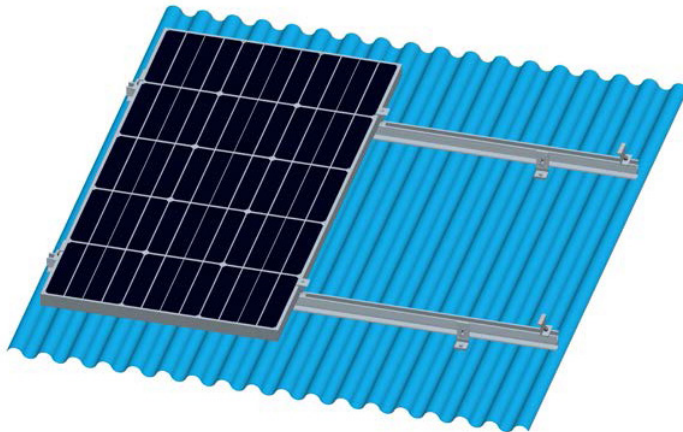
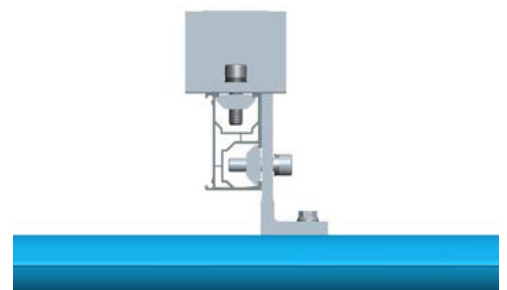


## Tin roof mounting kit

Solid, versatile for all metal sheet roofs



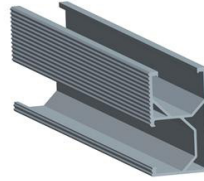
- Installation site: Pitched or flat roof
- Roof cladding: Suitable for most types of cladding
- Roof Slope: Up to 45°. Depending on condition, refer to manual.
- Building height: Up to 20m
- Wind speed: Up to 88m/s(316.8kmh/196.9mph)
- Standard: AS/NZ1170.2:2011, JIS C 8955:2011, other international standards
- Supporting profile: Minimum two rails supporting each panel
- Distance between rail fixings: Depending on load condition, refer to manual
- PV module: Framed, unframed
- Module orientation: Landscape, portrait
- Size of module array: Any layout up to site condition
- Material: Anodized aluminum 6005 T5, stainless steel 304, 410
- Color: Natural, powder coated
- Module widths: Maximum 1.0m
- Module lengths: Maximum 2.0m
- Warranty: 10 years limited warranty, refer to warranty doc
- All profiles are available in various lengths or can be cut to measure.



## Standard 3 panel tin kit

Each Standard 3 panel tile kit comprises of:

- **AT-CG-010** Rail 3200mm  
Quantity:2 units



- **AT-L05** L foot bracket  
Quantity:4 units

Each Contains:		Quantity
AT-FWNY-05	L foot*	1
AT-29	T module	1
M8*30	Stainless steel bolt	1
2mm EPDM	Rubber pad	1

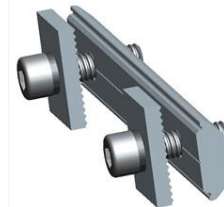


## Additional components for complete kit

### AT-S10 Rail splice kit

Quantity\*:1 unit

Each Contains:		Quantity
AT-S10	Splice	1
M8*20	Stainless steel bolt	2



### AT-C09 Mid clamp kit

Quantity\*:4 units

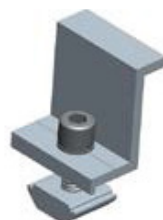
Each Contains:		Quantity
AT-FWNY-09	Mid T	1
M8*20	Stainless steel bolt	1
AT-29	T module	1



### AT-C12 End clamp kit

Quantity\*:4 units

Each Contains:		Quantity
AT-12	End Z	1
M8*50	Stainless steel bolt	1
AT-29	T module	1



\*Depending on the site condition, the components quantity might change. Please refer to the manual.

## Additional components for flat roof

### AT-F71 Front leg assembly

Quantity\*:3 units

Each Contains:		Quantity
AT-F71	Front leg	1
ST6.3*80	Self-tapping screw	2
2mm EPDM	Rubber pad	1



### AT-F57 Back leg assembly

Quantity\*:3 units

Each Contains:		Quantity
AT-F57	Back leg, angle 10-15°, 15-30°, 30-60°	1
ST6.3*80	Self-tapping screw	2
2mm EPDM	Rubber pad	1



### AT-C20 Klip-lok 406

Quantity\*:6 units

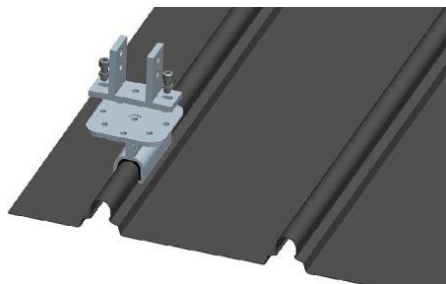
Each Contains:		Quantity
AT-C20	Klip-lok 406	1
M8*10	Stainless steel bolt	2
2mm EPDM	Rubber pad	1



### AT-C25 Klip-lok 700

Quantity\*:6 units

Each Contains:		Quantity
AT-C25	Klip-lok 700	1
M8*10	Stainless steel bolt	2
2mm EPDM	Rubber pad	1



\*Depending on the site condition, the components quantity might change. Please refer to the manual.